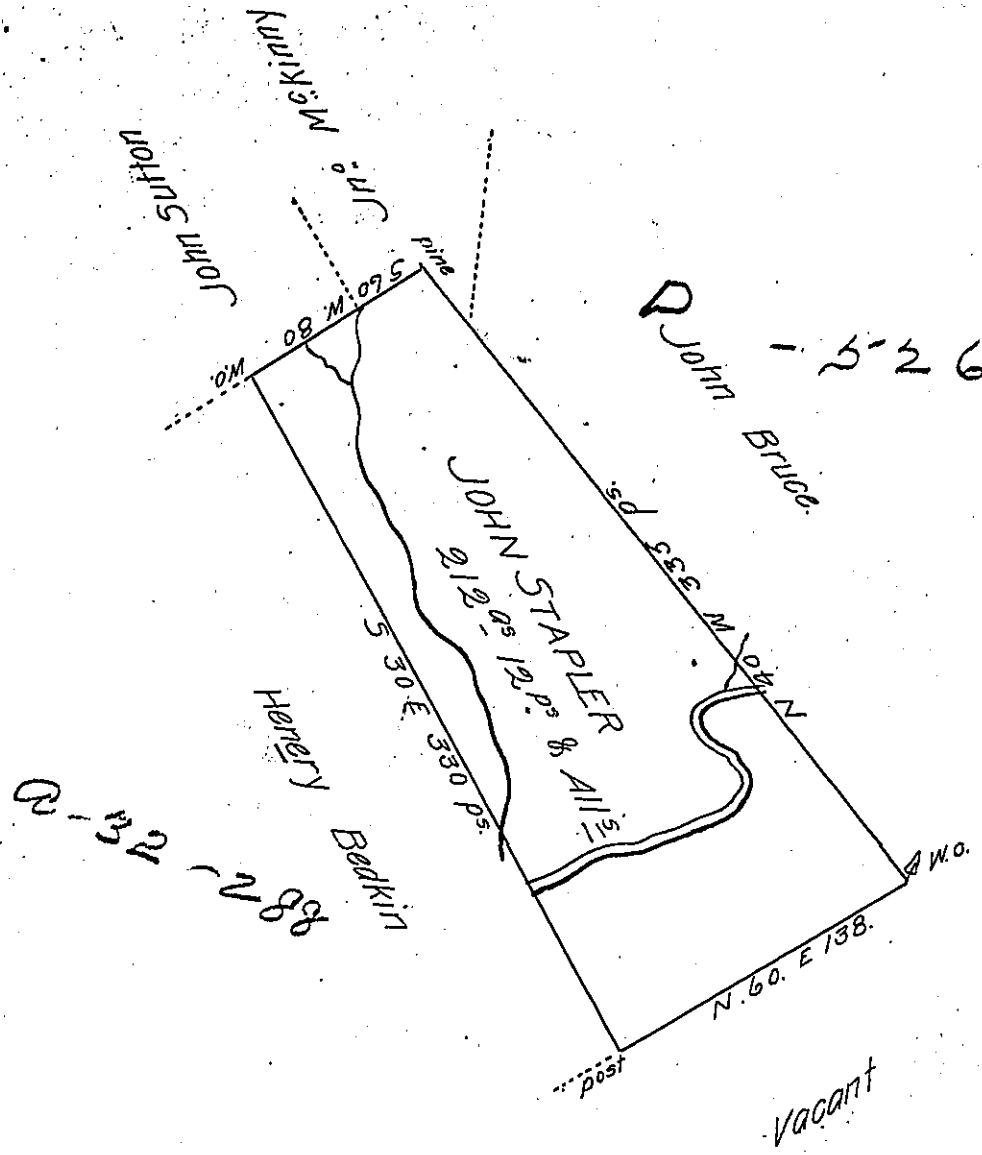


FORM NO. 1.



By Virtue of A Warrant dated the 30<sup>th</sup> day of July 1784 Surveyed the 20 day of June 1788 Unto John Stapler the above described Tract of Land Situate on the East Branch of Fishing Creek Containing two hundred twelve Acres twelve perches & Alls of Six per Cent adjoining Land Surveyed to John Sutton, Henry Bedkin & Others in Worming Township North<sup>d</sup> County.

By W<sup>m</sup> Montgomery D.S.

To John Lukens Esq<sup>r</sup> }  
 Surveyor General

IN TESTIMONY that the above is a copy of the original remaining on file in the Department of Internal Affairs of Pennsylvania, made conformably to an Act of Assembly approved the 16th day of February, 1833, I have hereunto set my Hand and caused the Seal of said Department to be affixed at Harrisburg, this eighteenth day of December 1906.

*Loac R Brown*  
 Secretary of Internal Affairs.